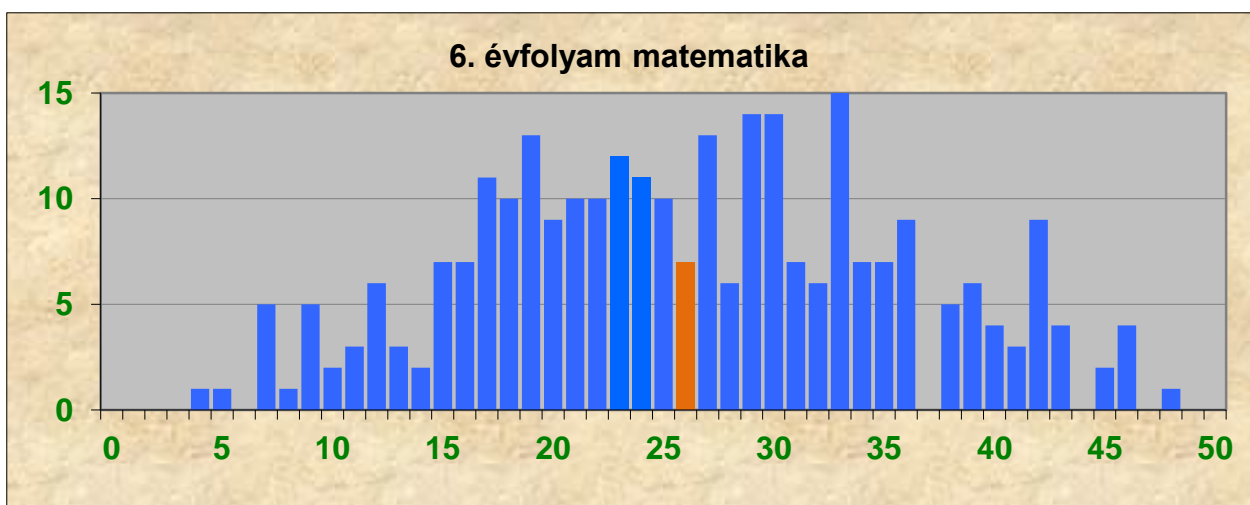
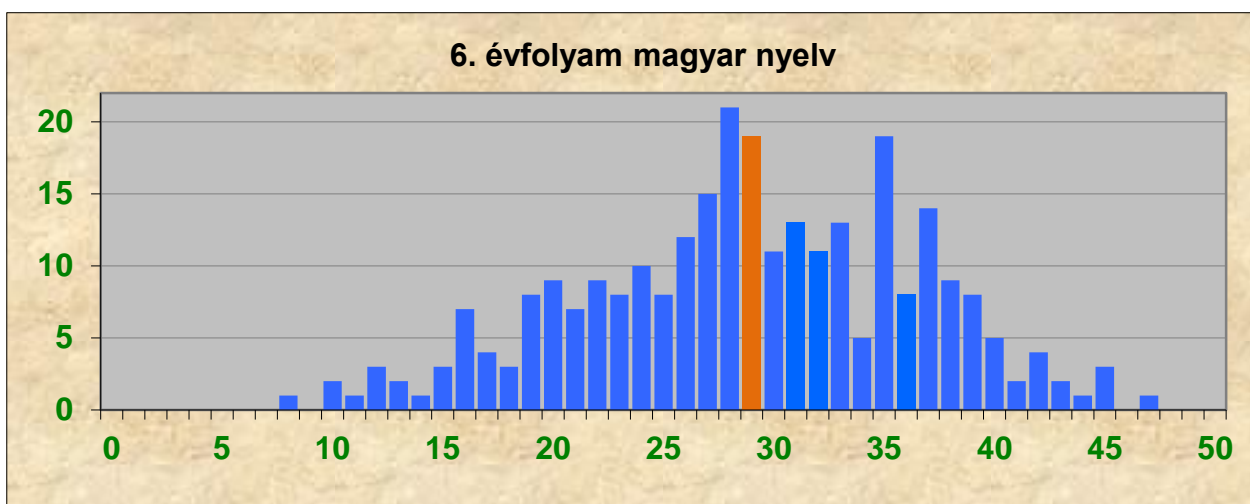


# A 6. ÉVFOLYAMOSOK EREDMÉNYEI

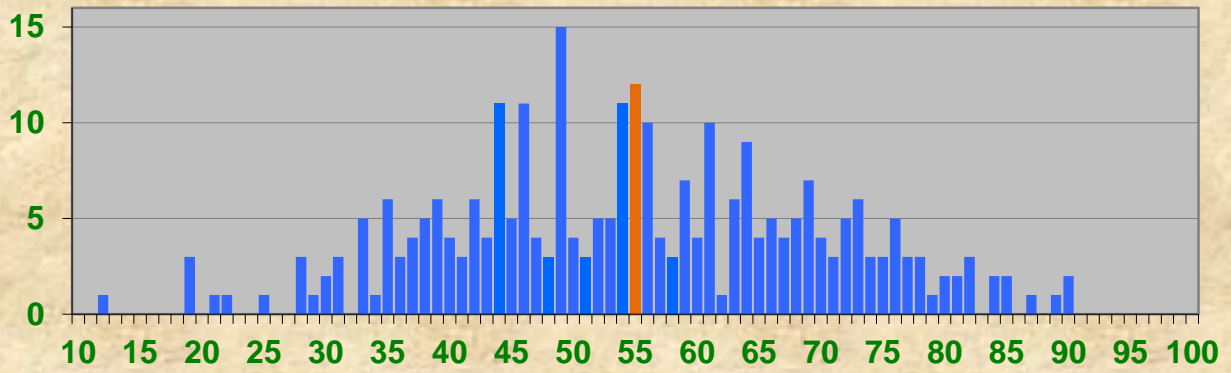
**Magyar nyelv átlag: 28,8 pont** (2018: 30,7; 2017: 35,6; 2016: 32,0; 2015: 30,5)

**Matematika átlag: 26,0 pont** (2018: 37,2; 2017: 22,9; 2016: 24,2; 2015: 24,2)

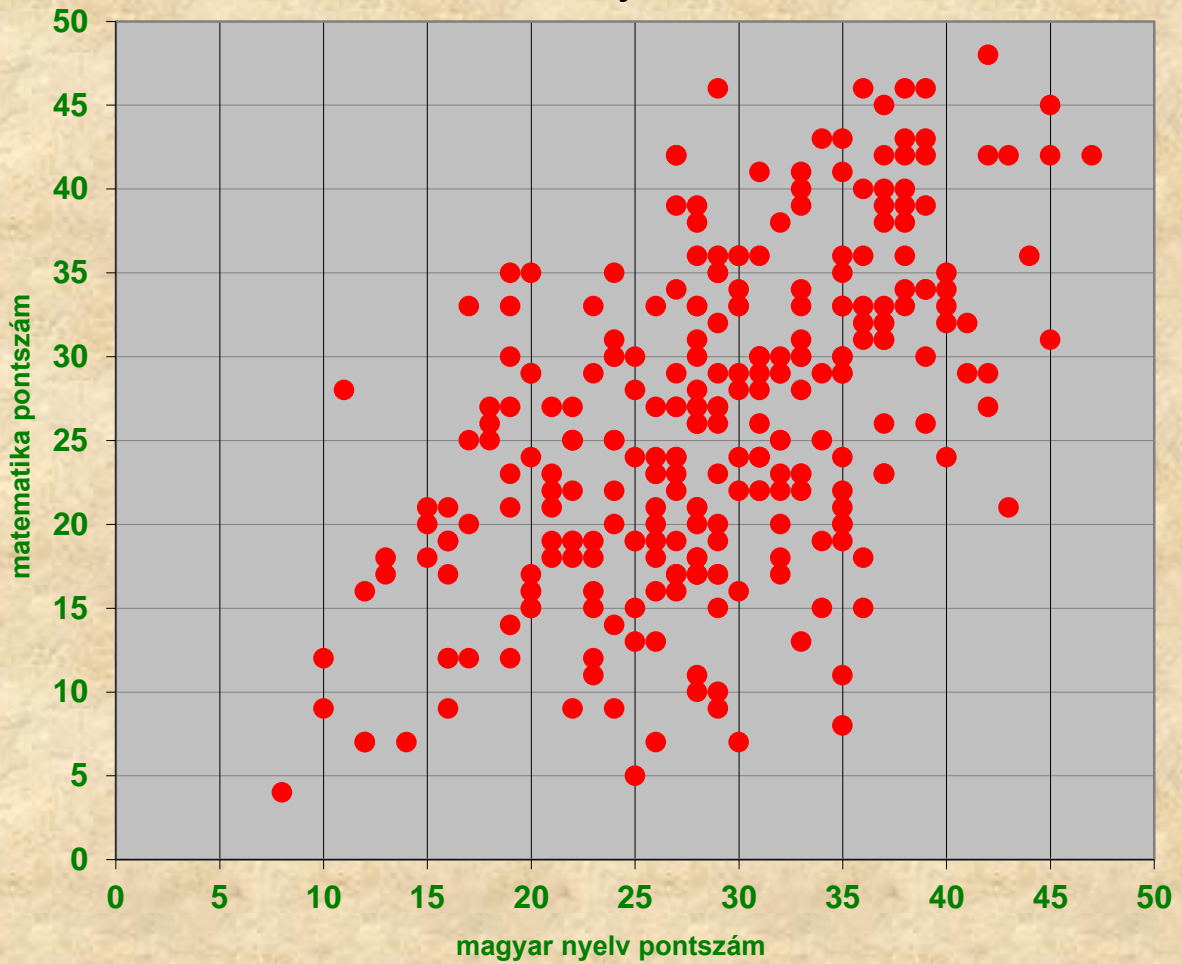
**Összpontszám átlag: 54,8 pont** (2018: 67,9; 2017: 58,6; 2016: 56,2; 2015: 54,7)



6. évfolyam összpontszám



6. évfolyam

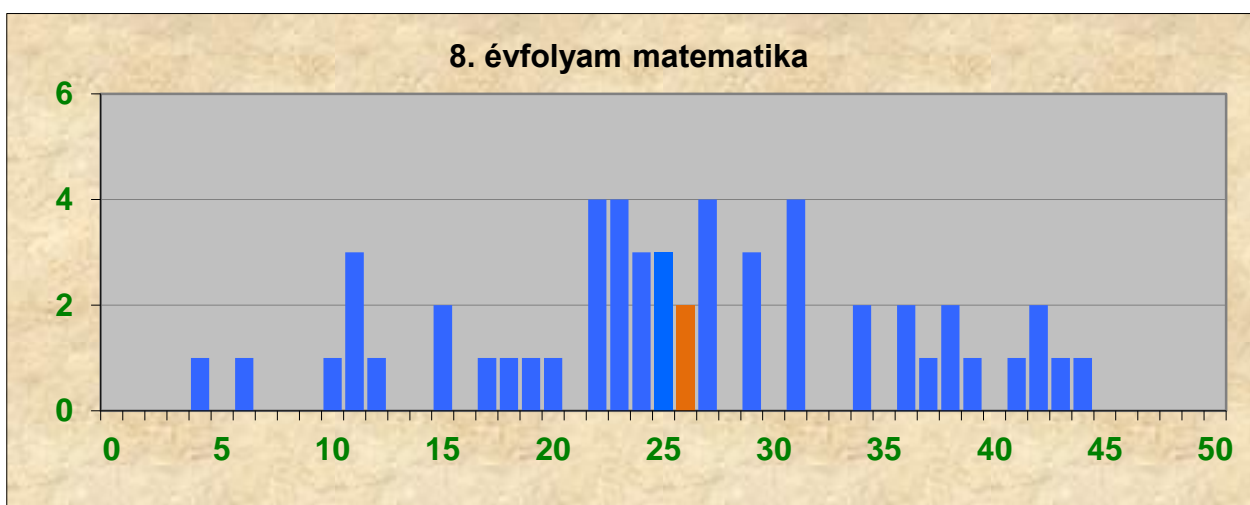
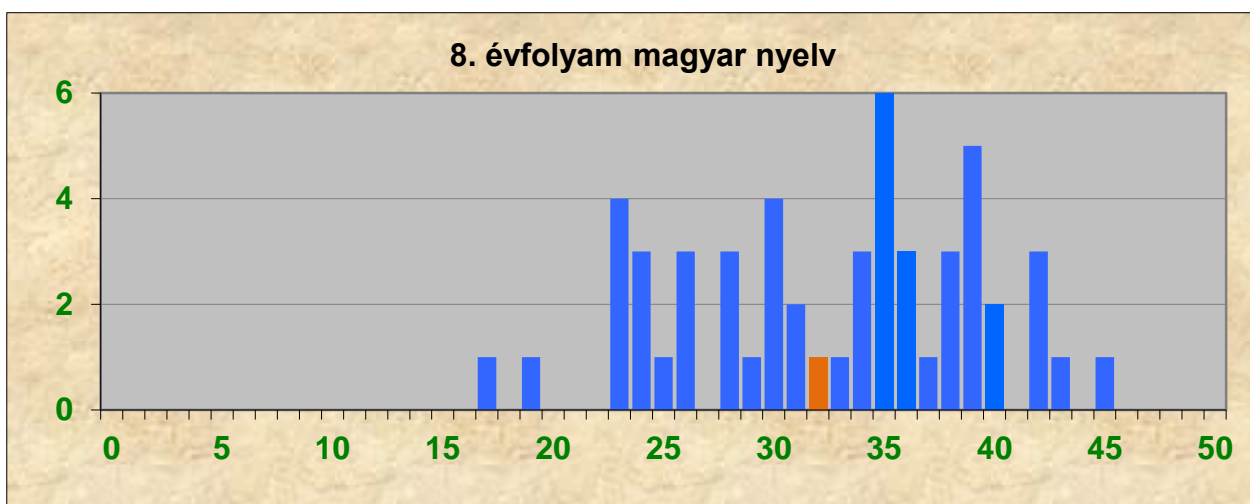


# A 8. ÉVFOLYAMOSOK EREDMÉNYEI

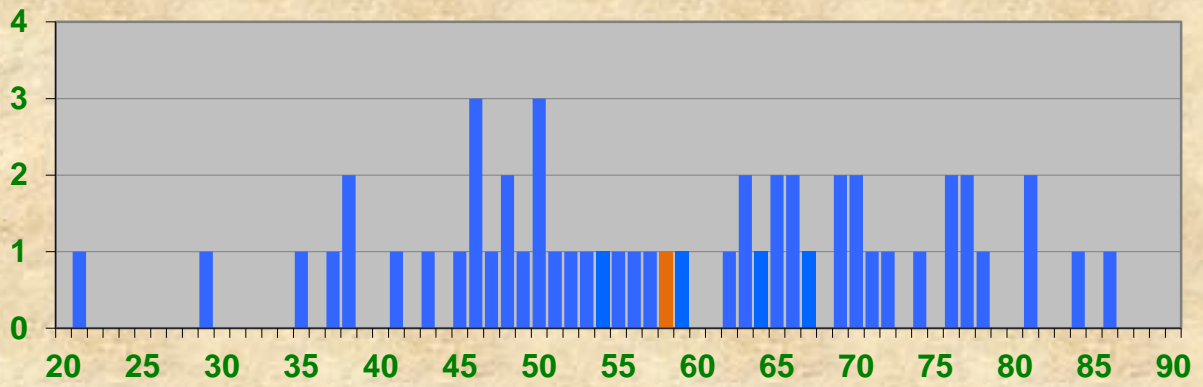
Magyar nyelv átlag: **32,5 pont** (2018: 39,5; 2017: 36,6; 2016: 34,7; 2015: 32,9)

Matematika átlag: **25,9 pont** (2018: 26,6; 2017: 28,5; 2016: 24,7; 2015: 26,4)

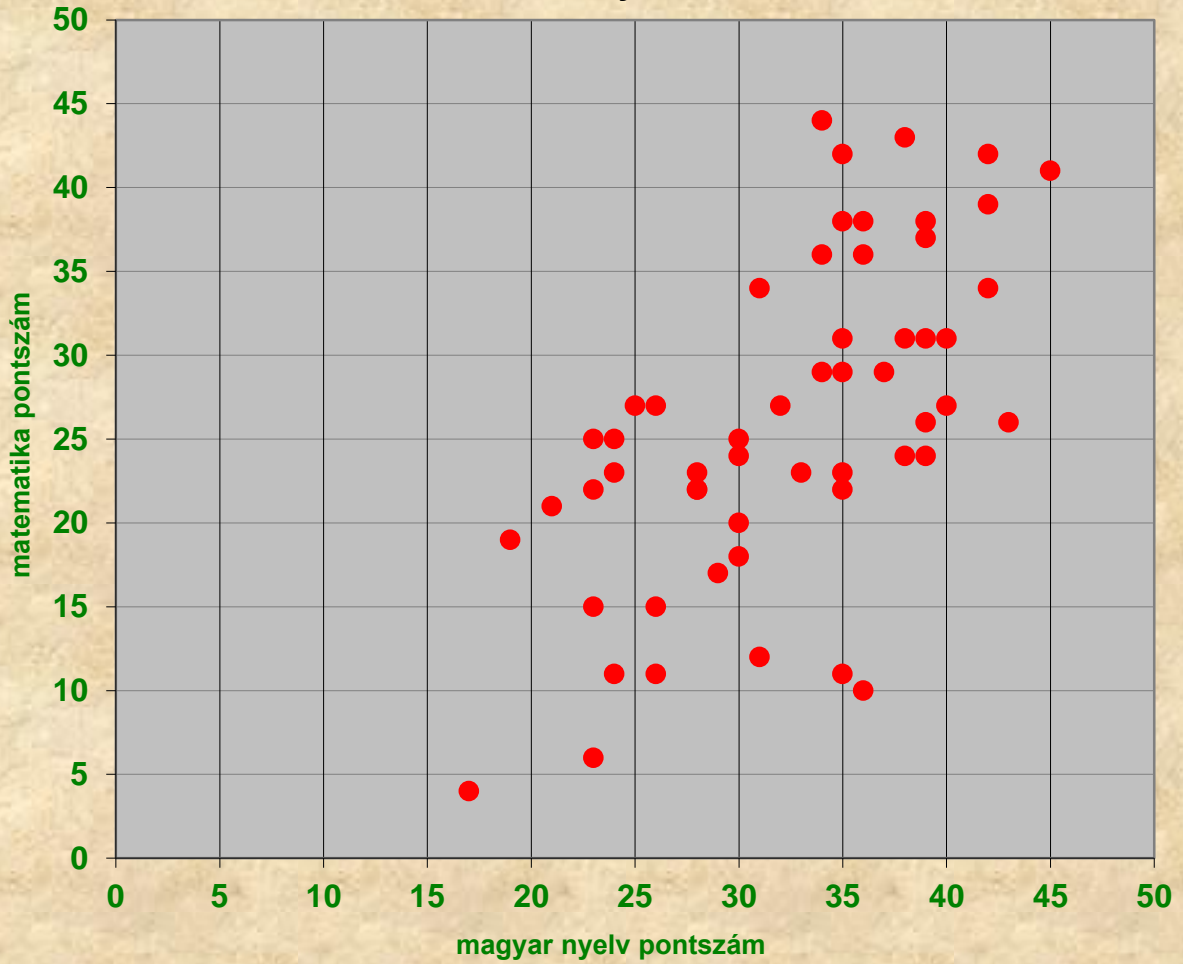
Összpontszám átlag: **58,4 pont** (2018: 66,2; 2017: 65,2; 2016: 59,4; 2015: 58,9)



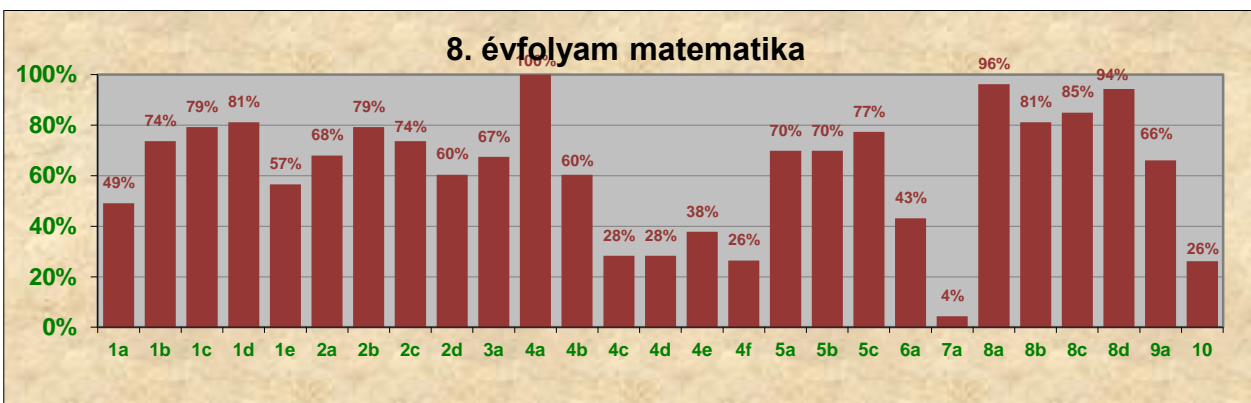
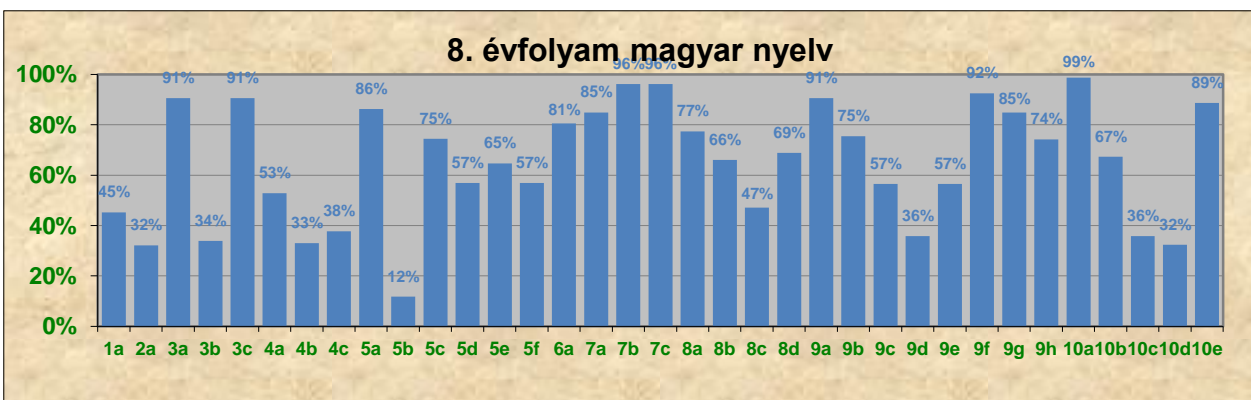
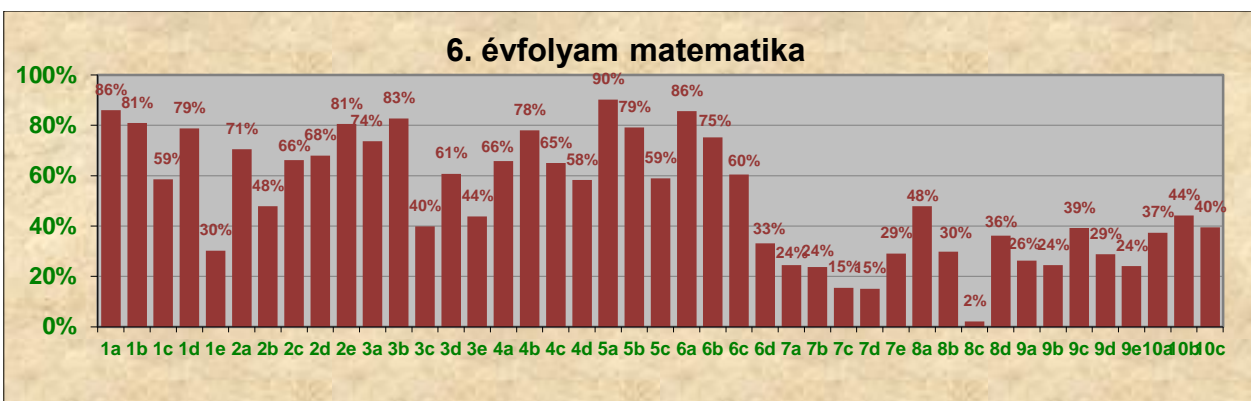
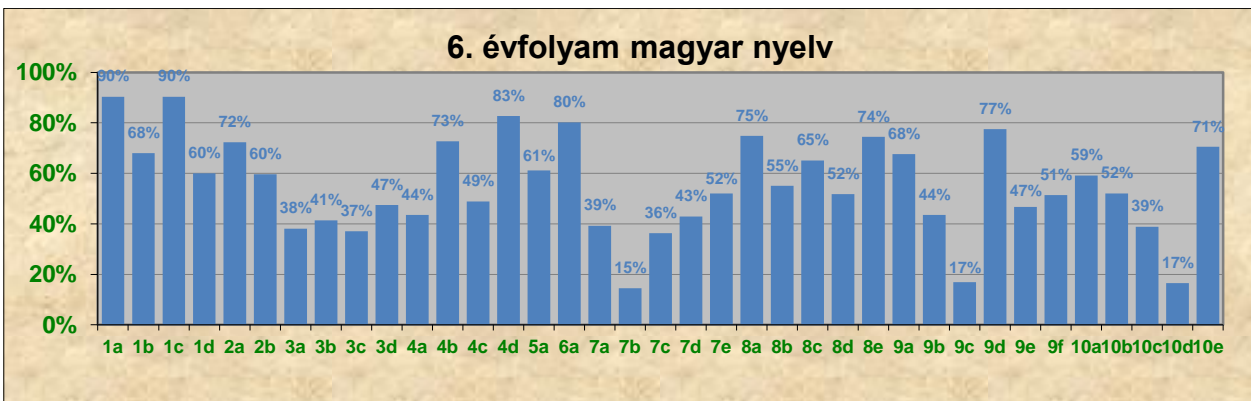
8. évfolyam összpontszám



8. évfolyam



# A FELADATSOROK ITEMENKÉNTI EREDMÉNYESSÉGE



## Magyar nyelv 6. osztály

	1a	1b	1c	1d	2a	2b	3a	3b	3c	3d	4a	4b	4c	4d	5a	6a	7a	7b	7c	7d	7e	8a	8b	8c	8d	8e	9a	9b	9c	9d	9e	9f	10a	10b	10c	10d	10e	
0	27	89	27	111	76	111	172	163	175	146	157	76	142	6	108	55	167	235	175	157	132	70	125	97	134	71	90	157	231	34	148	135	19	64	99	212	82	
1	251	189	251	167	199	164	106	115	103	132	121	202	136	10			108	40	100	118	143	208	153		144	207	188	121	47	21	130	143	76	139	142	35	196	
2														28	170	223									181													
3														82																								
4														152																								
ÁTL	0,90	0,68	0,90	0,60	0,72	0,60	0,38	0,41	0,37	0,47	0,44	0,73	0,49	3,31	1,22	1,60	0,39	0,15	0,36	0,43	0,52	0,75	0,55	1,30	0,52	0,74	0,68	0,44	0,17	2,32	0,47	0,51	1,77	1,04	0,78	0,33	0,71	
MAX	1	1	1	1	1	1	1	1	1	1	1	1	1	4	2	2	1	1	1	1	1	1	1	2	1	1	1	1	1	3	1	1	3	2	2	2	1	
%	90%	68%	90%	60%	72%	60%	38%	41%	37%	47%	44%	73%	49%	83%	61%	80%	39%	15%	36%	43%	52%	75%	55%	65%	52%	74%	68%	44%	17%	77%	47%	51%	59%	52%	39%	17%	71%	

## Matematika 6. osztály

	1a	1b	1c	1d	1e	2a	2b	2c	2d	2e	3a	3b	3c	3d	3e	4a	4b	4c	4d	5a	5b	5c	6a	6b	6c	6d	7a	7b	7c	7d	7e	8a	8b	8c	8d	9a	9b	9c	9d	9e	10a	10b	10c		
0	39	53	115	59	194	82	145	94	89	54	73	48	167	109	156	95	61	97	116	5	58	114	40	69	110	166	210	212	235	236	197	145	195	272	140	205	210	169	198	211	174	155	168		
1	239	225	163	219	84	196	133	184	189	224	205	230	111	169	122		217	181	162	33	220	164	238	209	168	40	68	66	43	42	81	133	83	6	75	73	68	109	80	67		123			
2																183				1						72										63							104		110
3																				239																									
ÁTL	0,86	0,81	0,59	0,79	0,30	0,71	0,48	0,66	0,68	0,81	0,74	0,83	0,40	0,61	0,44	1,32	0,78	0,65	0,58	2,71	0,79	0,59	0,86	0,75	0,60	0,66	0,24	0,24	0,15	0,15	0,29	0,48	0,30	0,02	0,72	0,26	0,24	0,39	0,29	0,24	0,75	0,44	0,79		
MAX	1	1	1	1	1	1	1	1	1	1	1	1	1	1	1	2	1	1	1	3	1	1	1	1	1	2	1	1	1	1	1	1	1	1	2	1	1	1	1	1	2	1	2		
%	86%	81%	59%	79%	30%	71%	48%	66%	68%	81%	74%	83%	40%	61%	44%	66%	78%	65%	58%	90%	79%	59%	86%	75%	60%	33%	24%	24%	15%	15%	29%	48%	30%	2%	36%	26%	24%	39%	29%	24%	37%	44%	40%		

## Magyar nyelv 8. osztály

	1a	2a	3a	3b	3c	4a	4b	4c	5a	5b	5c	5d	5e	5f	6a	7a	7b	7c	8a	8b	8c	8d	9a	9b	9c	9d	9e	9f	9g	9h	10a	10b	10c	10d	10e									
0	29	36	5	35	5	3	31	14	7	45	13	22	18	22	1	8	2	2	12	18	28	10	5	13	23	34	23	4	8	1	0	0	34	32	6									
1	24	17	48	18	48	14	9	38	44	6	38	29	33	29	4	45	51	51	41	35	25	13	48	40	30	19	30	49	45	5	0	14	19	5	47									
2						18	13	1							20								30																					
3						10									28																													
4						8																																						
ÁTL	0,45	0,32	0,91	0,34	0,91	2,11	0,66	0,75	0,86	0,12	0,75	0,57	0,65	0,57	2,42	0,85	0,96	0,96	0,77	0,66	0,47	1,38	0,91	0,75	0,57	0,36	0,57	0,92	0,85	2,23	2,96	2,02	0,36	0,65	0,89									
MAX	1	1	1	1	1	4	2	2	1	1	1	1	1	1	3	1	1	1	1	1	1	2	1	1	1	1	1	1	1	3	3	3	1	2	1									
%	45%	32%	91%	34%	91%	53%	33%	38%	86%	12%	75%	57%	65%	57%	81%	85%	96%	96%	77%	66%	47%	69%	91%	75%	57%	36%	57%	92%	85%	74%	99%	67%	36%	32%	89%									

## Matematika 8. osztály

	1a	1b	1c	1d	1e	2a	2b	2c	2d	3a	4a	4b	4c	4d	4e	4f	5a	5b	5c	6a	7a	8a	8b	8c	8d	9a	10
0	27	14	11	10	23	17	11	14	21	6	0	21	38	38	33	39	16	16	12	12	45	2	10	8	3	7	21
1	26	39	42	43	30	36	42	39	32	1	53	32	15	15	20	14	37		41	15	4	51	43	45	50	6	13
2										10								37		3	2					4	9
3										22										0	2					4	2
4										14										9	0					11	1
5																				1	0					21	0
6																				12							7
ÁTL	0,49	0,74	0,79	0,81	0,57	0,68	0,79	0,74	0,60	2,70	1,00	0,60	0,28	0,28	0,38	0,26	0,70	1,40	0,77	2,58	0,26	0,96	0,81	0,85	0,94	3,30	1,57
MAX	1	1	1	1	1	1	1	1	1	4	1	1	1	1	1	1	1	2	1	6	6	1	1	1	1	5	6
%	49%	74%	79%	81%	57%	68%	79%	74%	60%	67%	100%	60%	28%	28%	38%	26%	70%	70%	77%	43%	4%	96%	81%	85%	94%	66%	26%